

# Scheme Update

May 2019



# Contents

- Overview
- Scheme Layout
- Construction Details
- Programme



# Overview

- A key feature within Dublin Port Company's Masterplan
- Increase the accessibility of the Port from the City
- Emphasising the heritage importance of the Port
- An amenity for the local residential and working populations

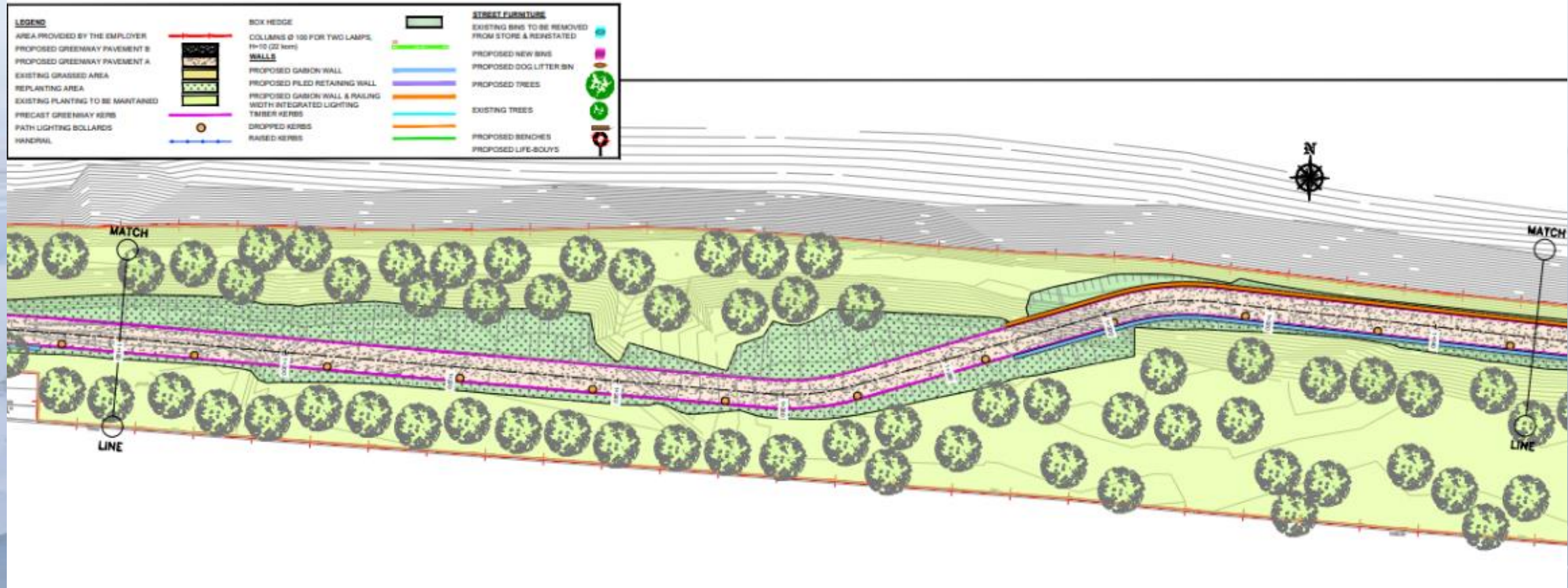
# Overview

- 3.1km of new Greenway from Bond Road to Alexandra Road Extension
- Feature park at Alexandra Road Extension
- Revetment repair / reinforcement
- Focussed low-impact lighting
- Management controls during construction and operation to avoid impacting on Biosphere

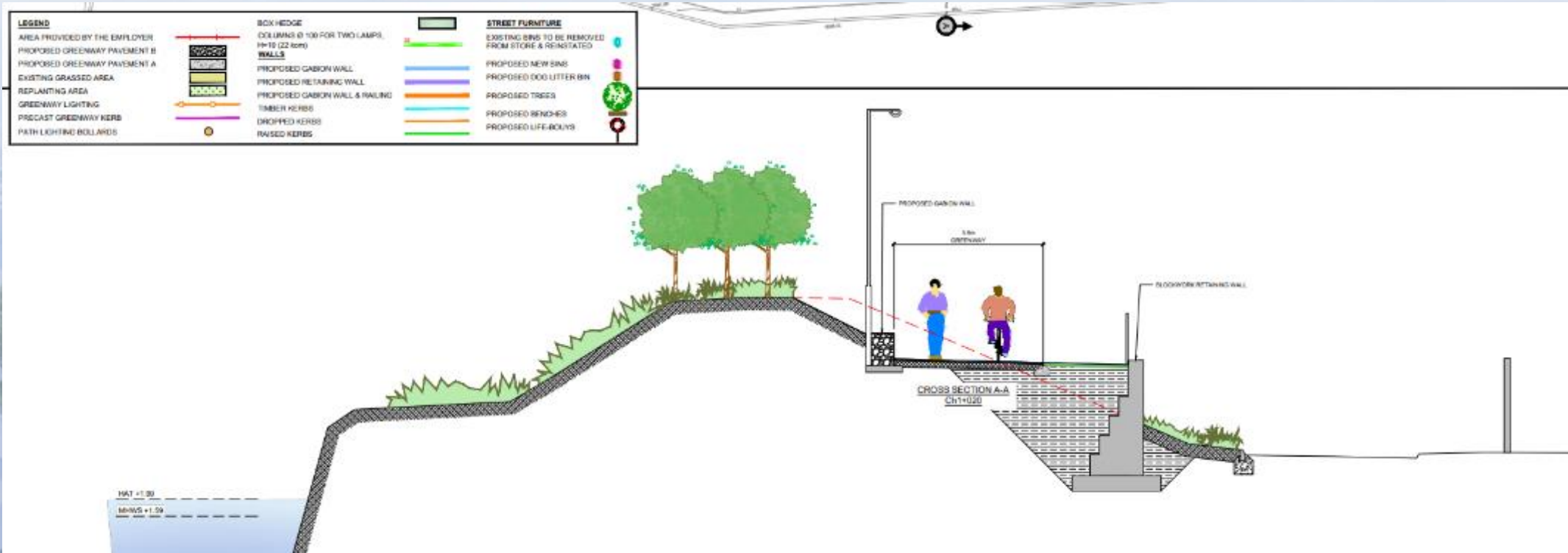
# Overview

- Phased removal and replacement / enhancement of landscaping.
- Landscaping scheme includes a combination of 6-10m high semi-mature Linden, Sycamore, Silver Birch, Holly Oak, London Plane and Scots Pine (c. 900) supplemented by immature (whips) Grey Willow, Common Alder, Hazel, Guelder Rose, Hawthorn, Blackthorn & Field Maple (c. 10,000) and a variety of shrubs at ground level.

# Layout – Bond Road to Customs House



# Section – Bond Road to Customs House



# Layout – Bond Road to Customs House

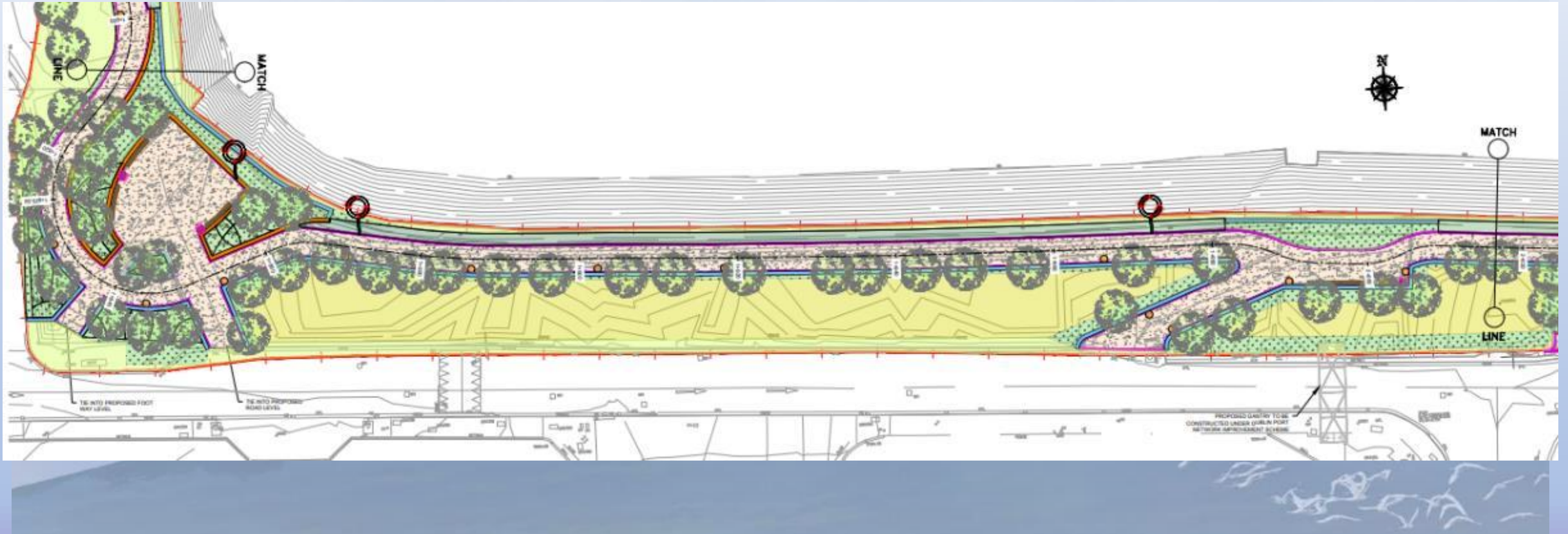




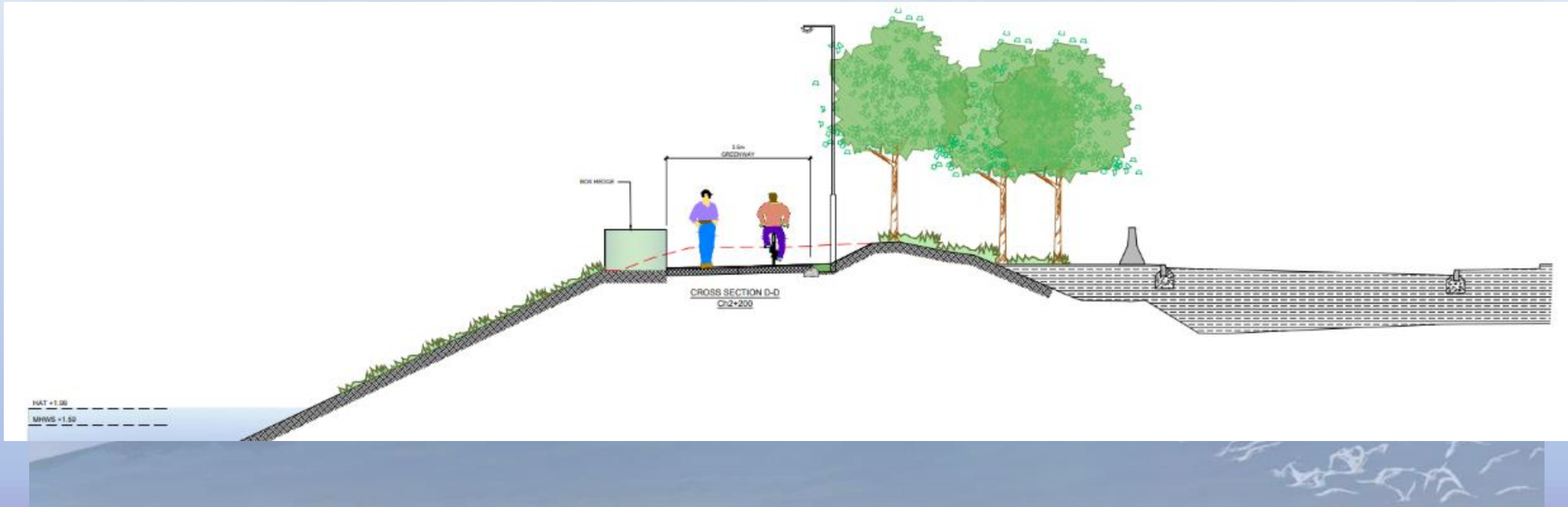
# Customs House Observation Point



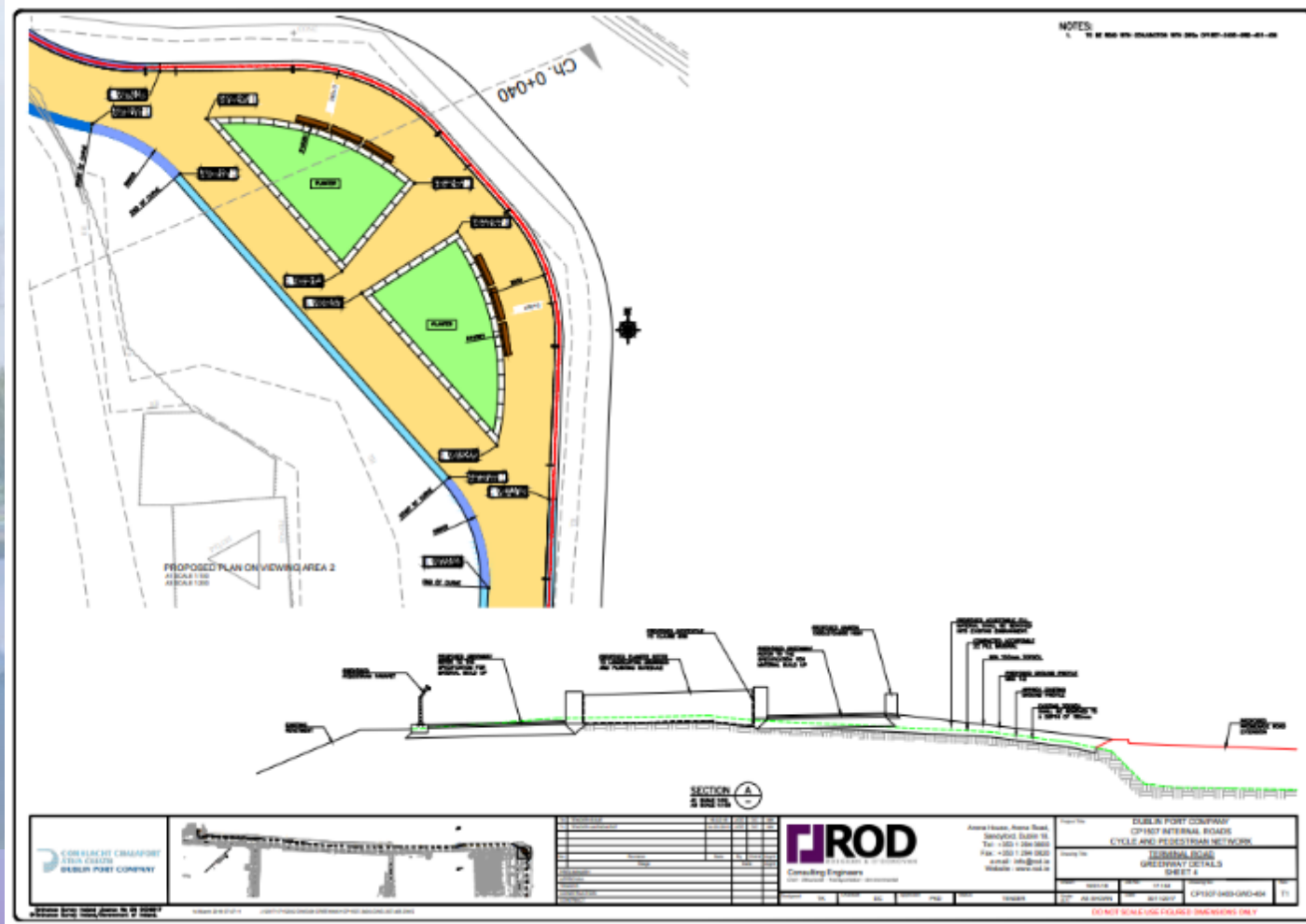
# Layout – Customs House to Terminal Road



# Section – Customs House to Terminal Road



# Terminal Road Viewing Area



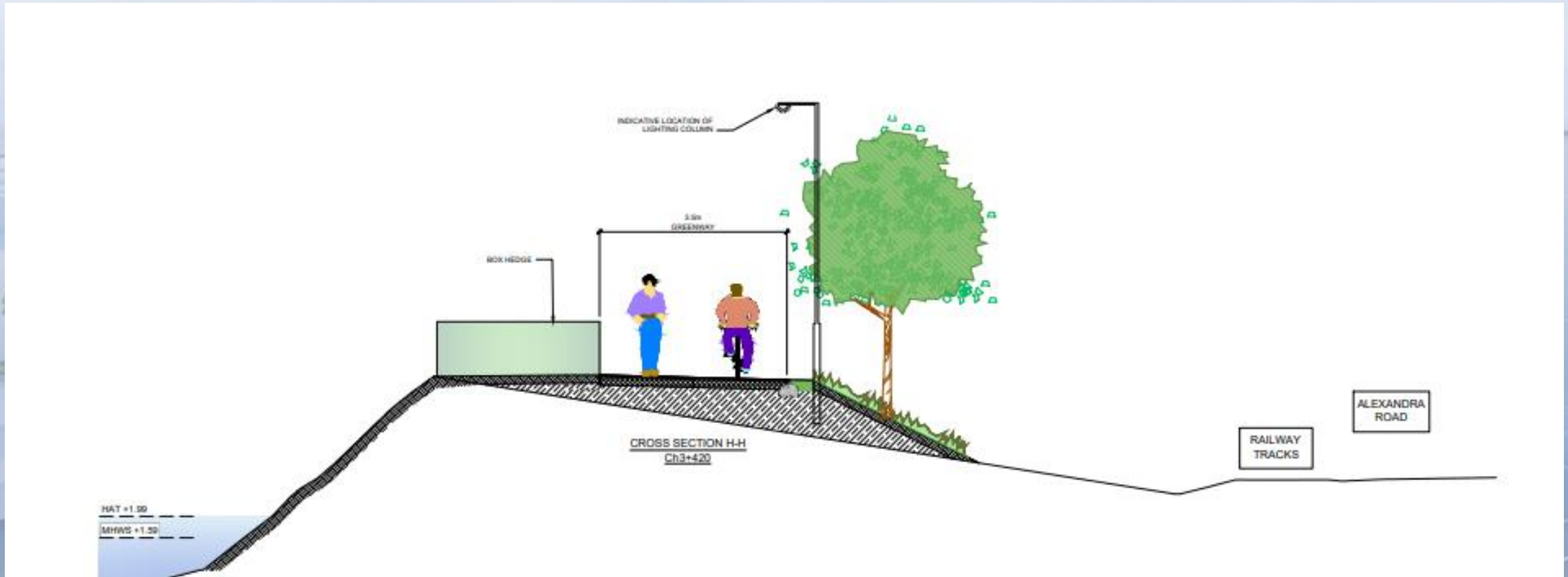
# Terminal Road Viewing Area



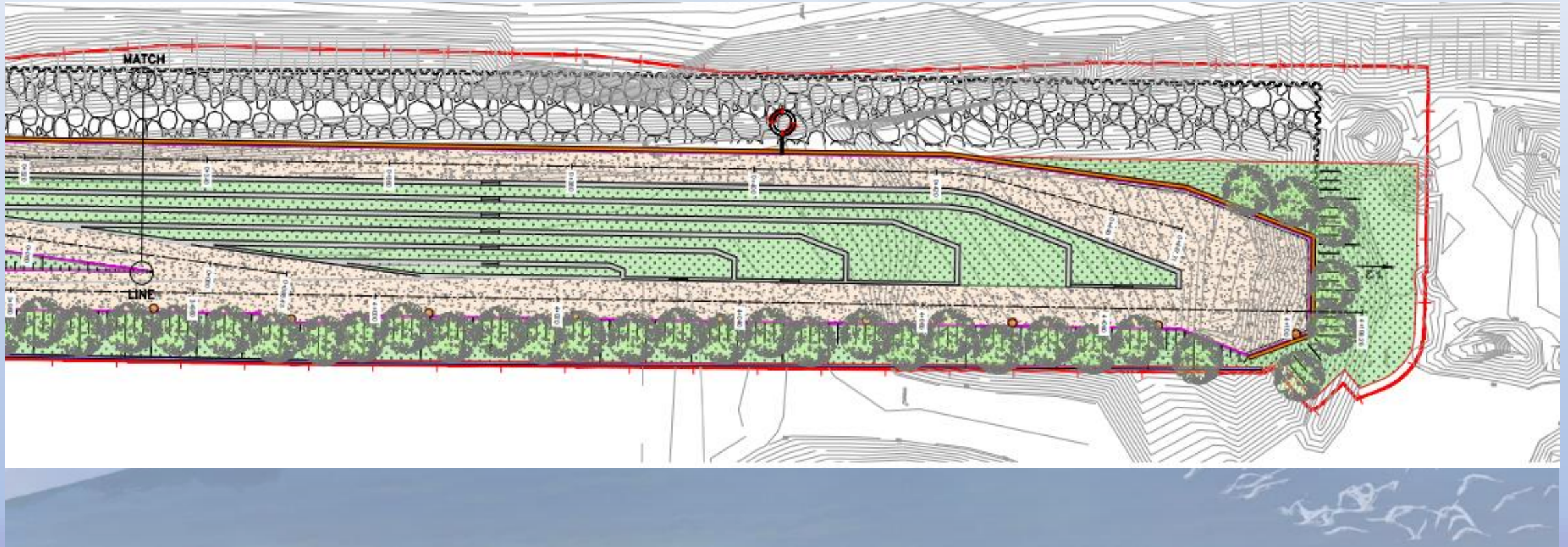
# Layout – Alexandra Road Extension



# Section – Alexandra Road Extension



# Dublin Port Park





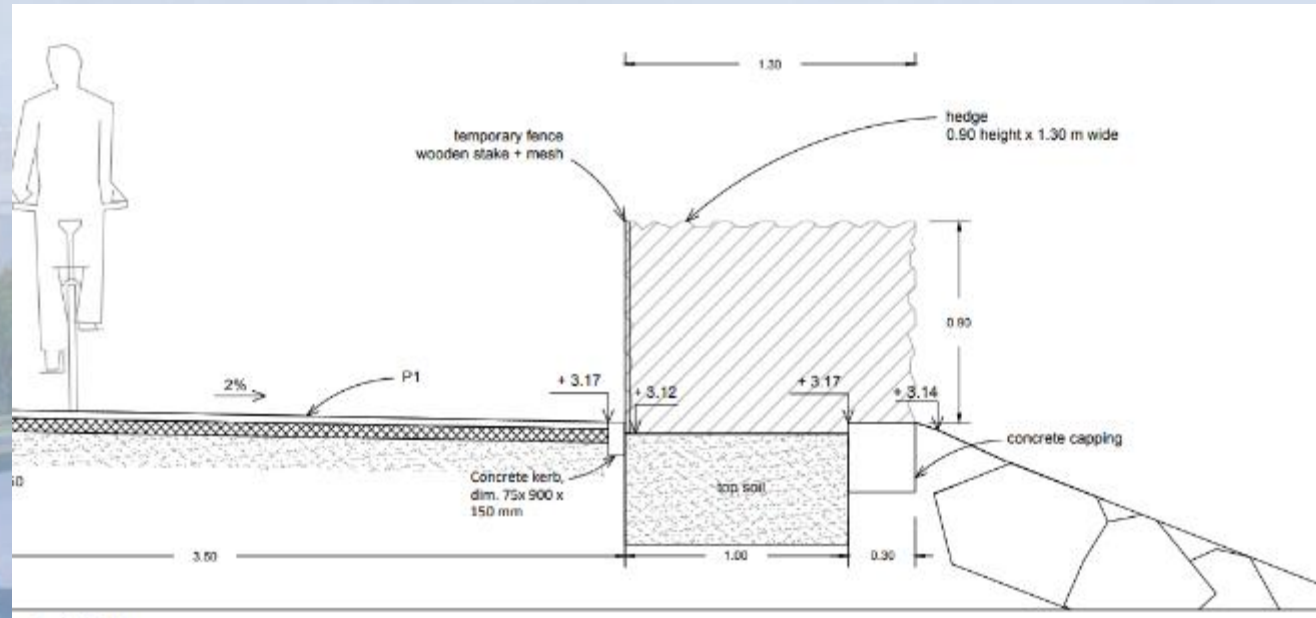
# Dublin Port Park



# Construction Details

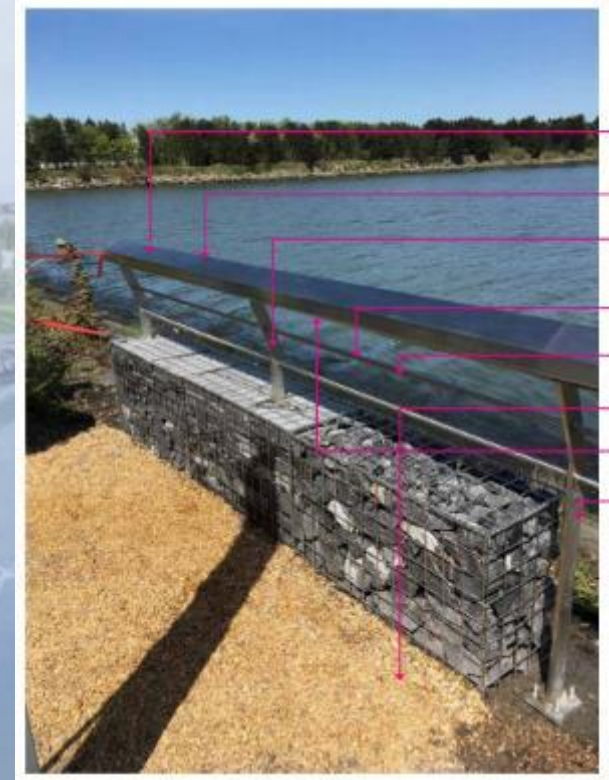
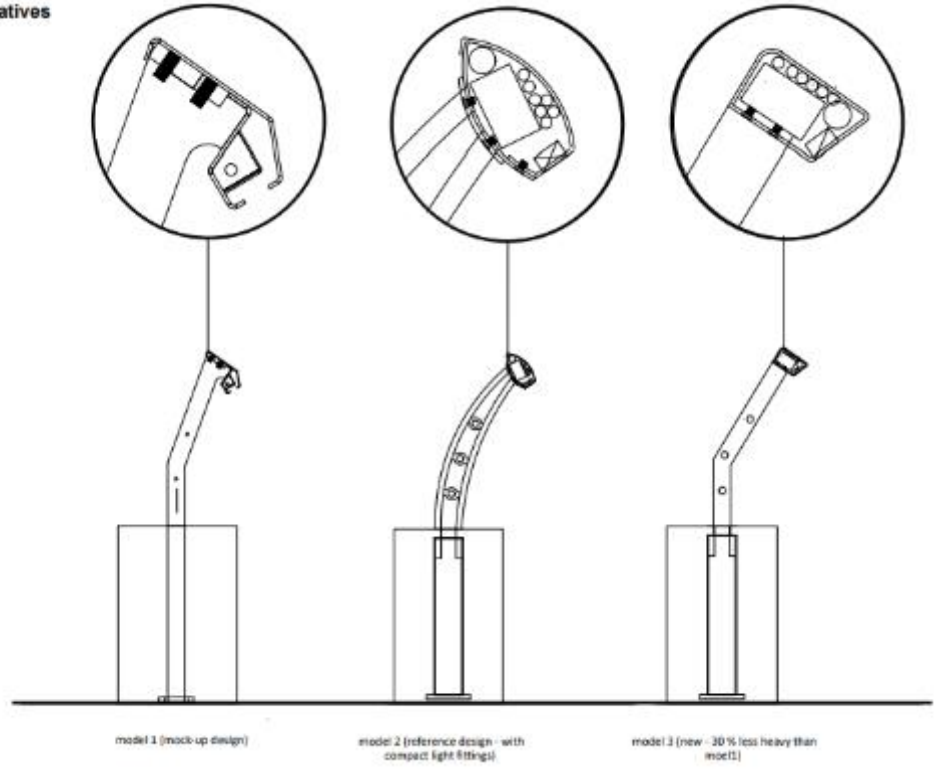
- Box hedging along greenway boundary
- Bespoke Lighting Scheme incorporating 5m high lighting standards with cowled, focussed, low-energy lighting to avoid light spill and sections of handrail lighting.
- Revetment repair and reinforcement where eroded
- Stepped park area with plastic reinforced concrete benches with inset lighting
- Durable wooden benches
- Provision for viewing areas and observation points

# Details – Box Hedge



# Details – Lighting

Fencing alternatives



# Viewing Areas and Observation Points



# Programme

- Tendering Period: May – October 2019
- Mobilisation: November 2019
- Phased Construction Works: 2020 – 2022

