

Scheme Update

July 2019



Contents

- Overview
- Scheme Layout
- Construction Details
- Programme



Overview

- A key feature within Dublin Port Company's Masterplan
- Increase the accessibility of the Port from the City
- Emphasising the heritage importance of the Port
- An amenity for the local residential and working populations

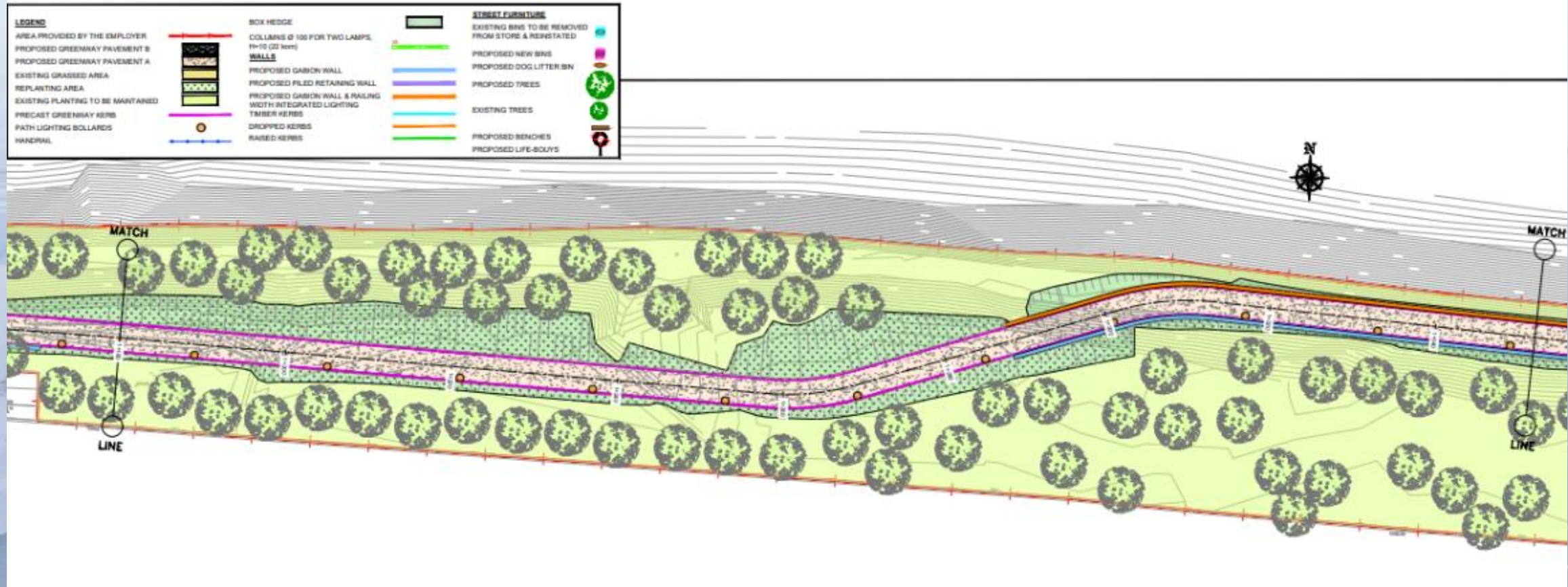
Overview

- 3.1km of new Greenway from Bond Road to Alexandra Road Extension
- Feature park at Alexandra Road Extension
- Revetment repair / reinforcement
- Focussed low-impact lighting
- Management controls during construction and operation to avoid impacting on Biosphere

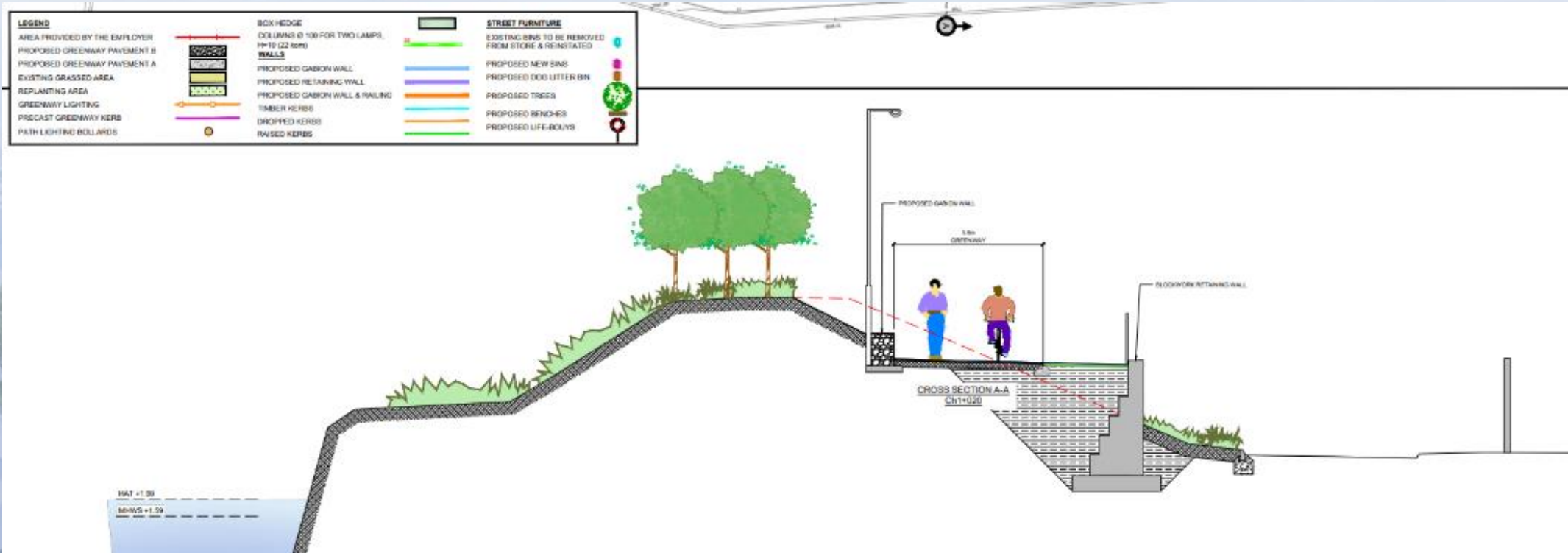
Overview

- Phased removal and replacement / enhancement of landscaping.
- Landscaping scheme includes a combination of 6-10m high semi-mature Linden, Sycamore, Silver Birch, Holly Oak, London Plane and Scots Pine (c. 900) supplemented by immature (whips) Grey Willow, Common Alder, Hazel, Guelder Rose, Hawthorn, Blackthorn & Field Maple (c. 10,000) and a variety of shrubs at ground level.
- Box hedging along greenway boundary, primarily consisting of Lonicera Pileata, interspersed with Brachyglottis, Eleagnus, Damask Rose, Dogwood, Spindle and Guelder Rose 1m – 2m high

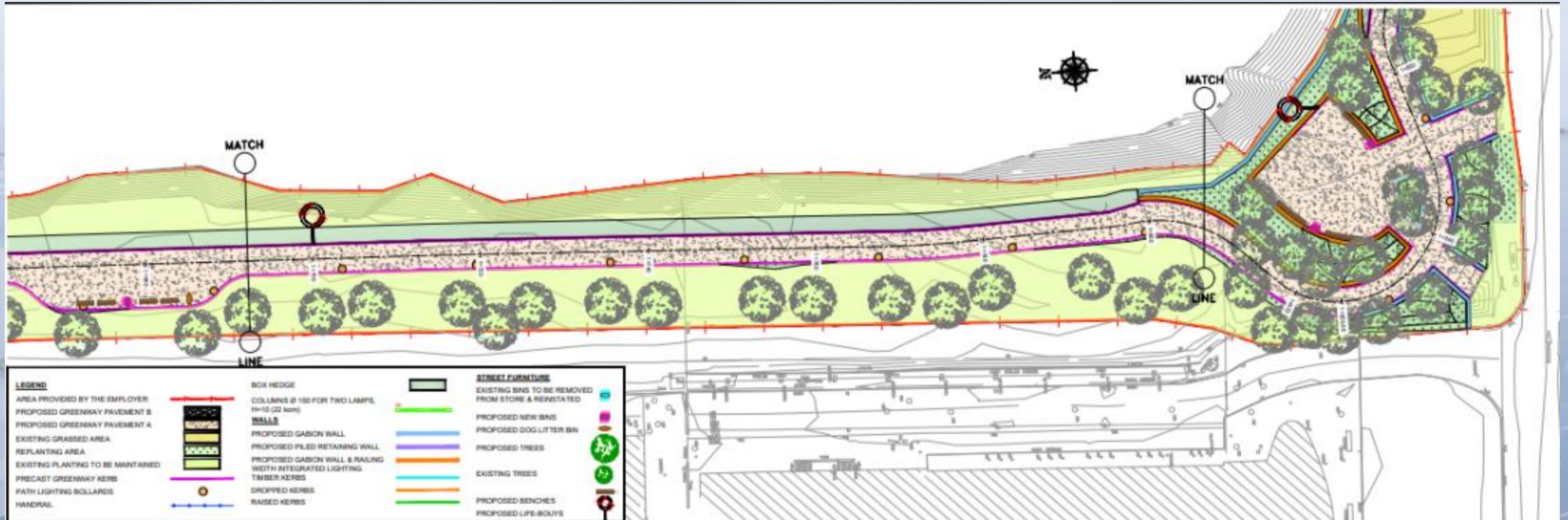
Layout – Bond Road to Customs House



Section – Bond Road to Customs House



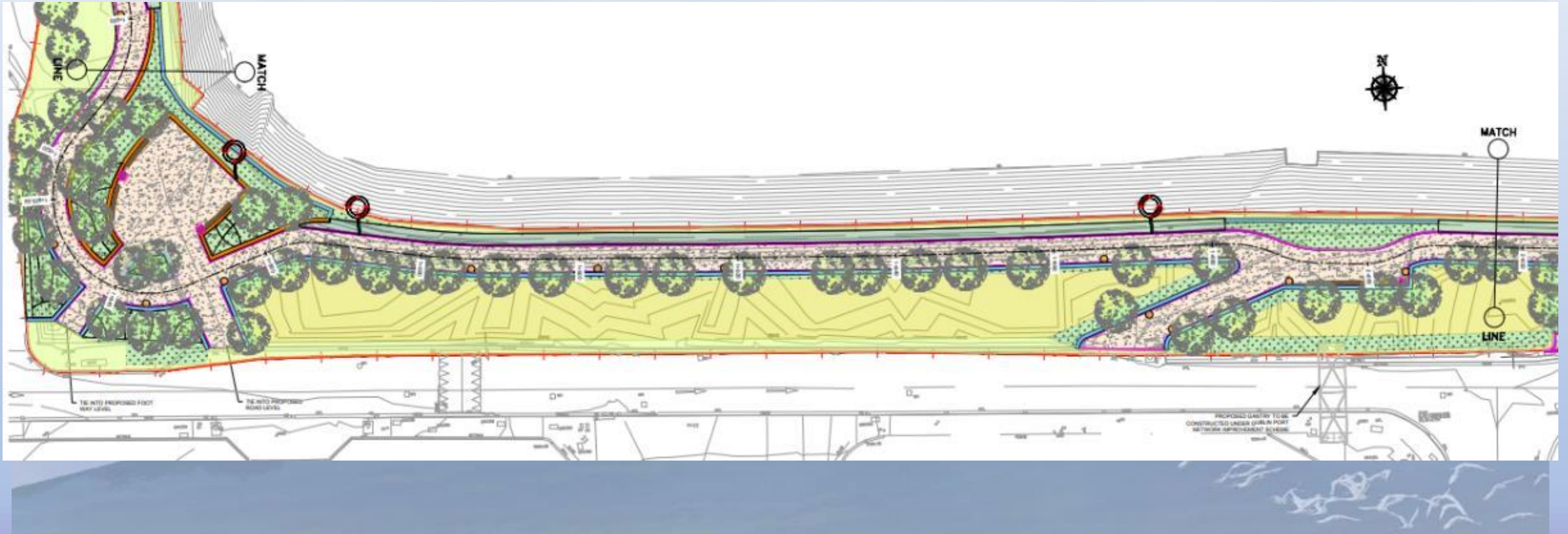
Layout – Bond Road to Customs House



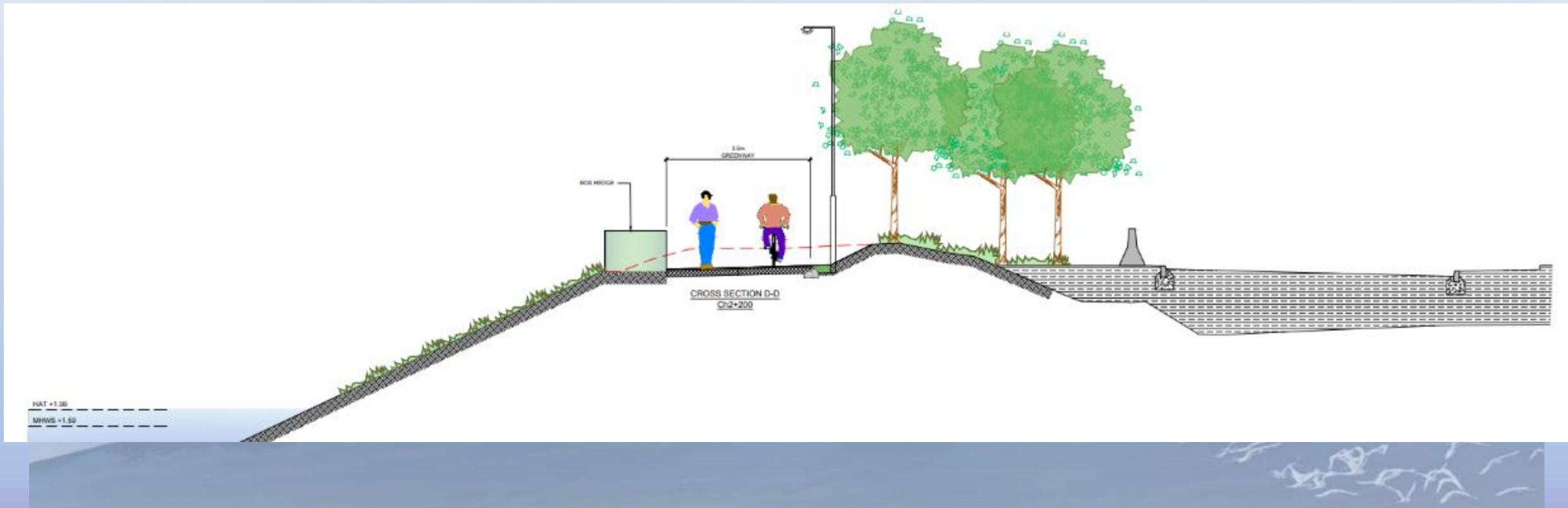
Customs House Observation Point



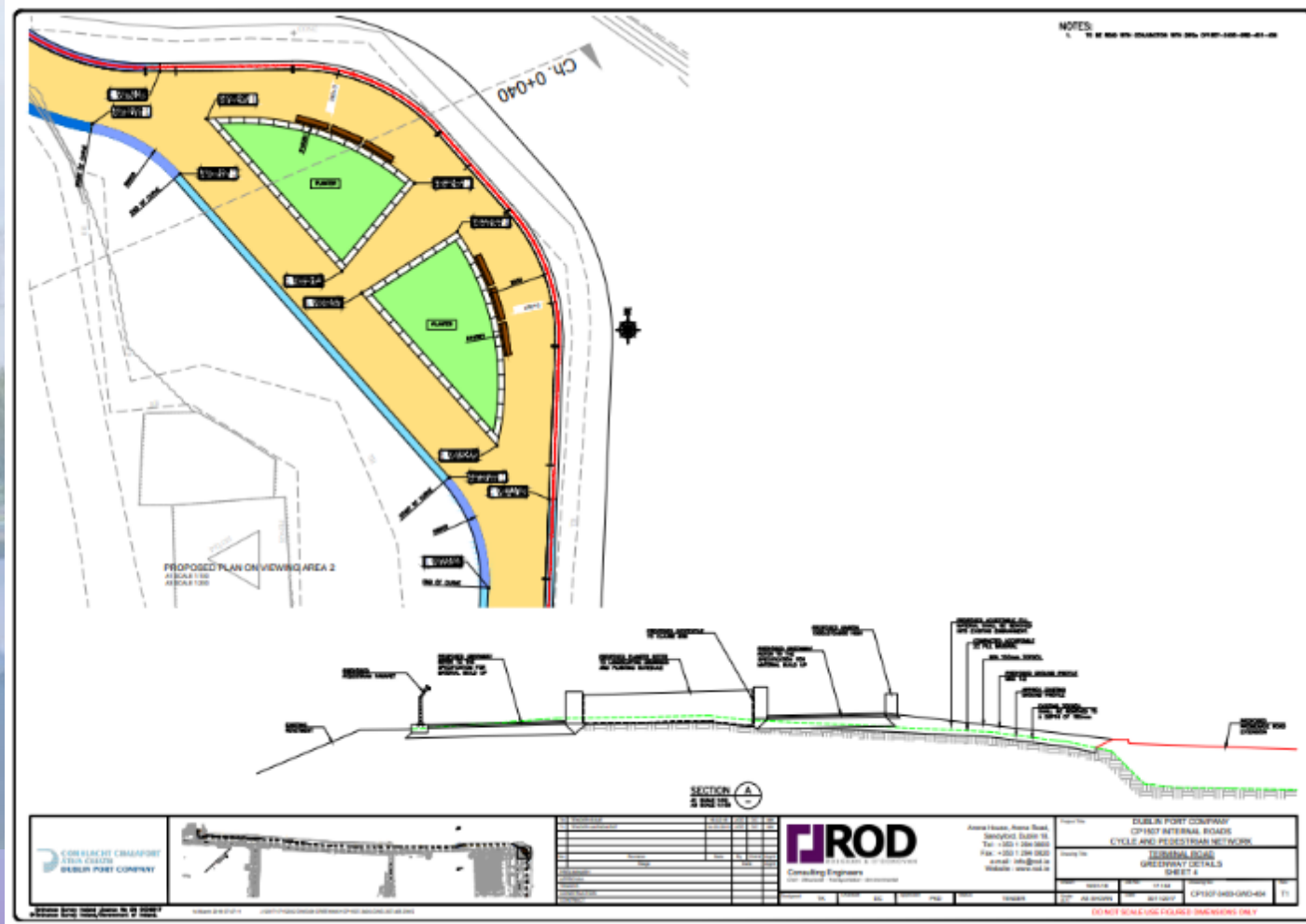
Layout – Customs House to Terminal Road



Section – Customs House to Terminal Road



Terminal Road Viewing Area



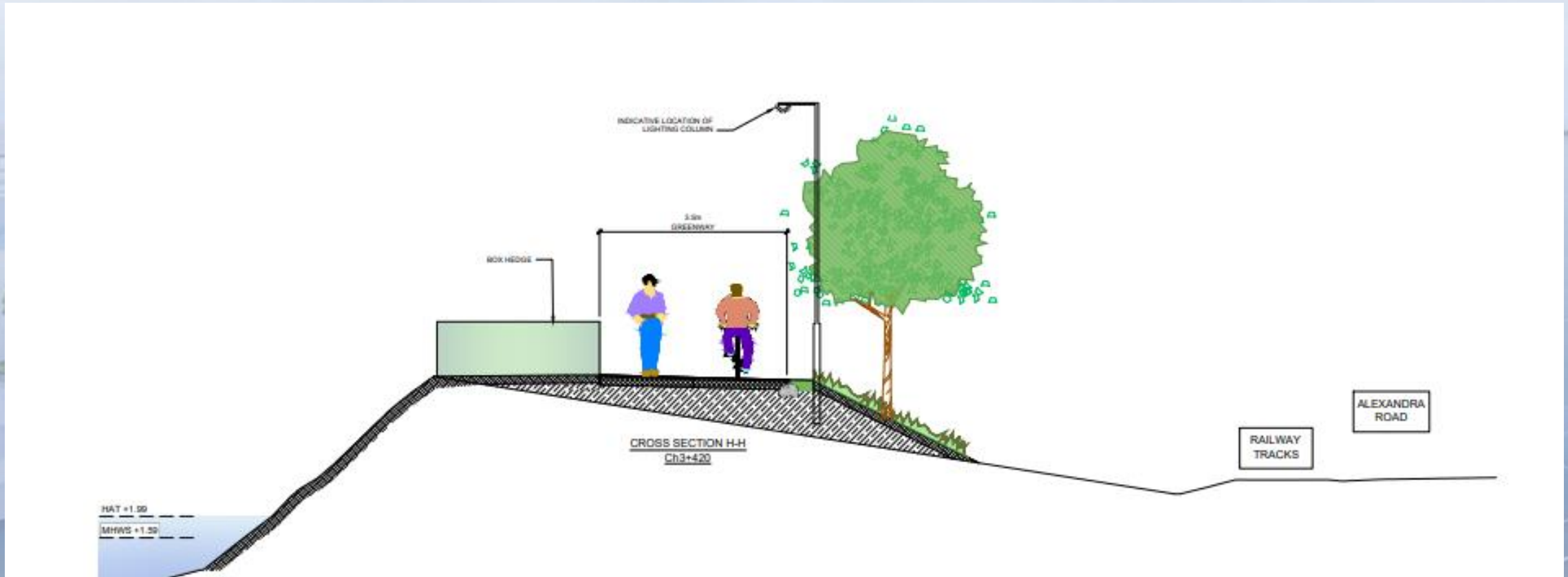
Terminal Road Viewing Area



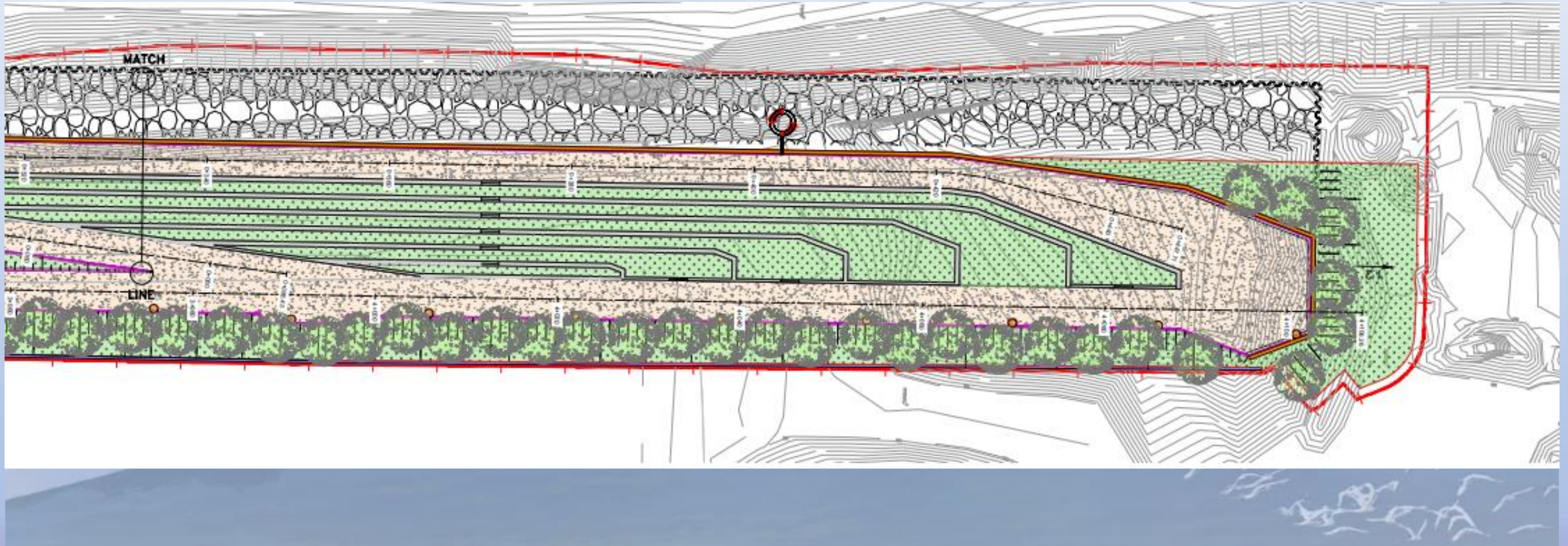
Layout – Alexandra Road Extension



Section – Alexandra Road Extension



Dublin Port Park



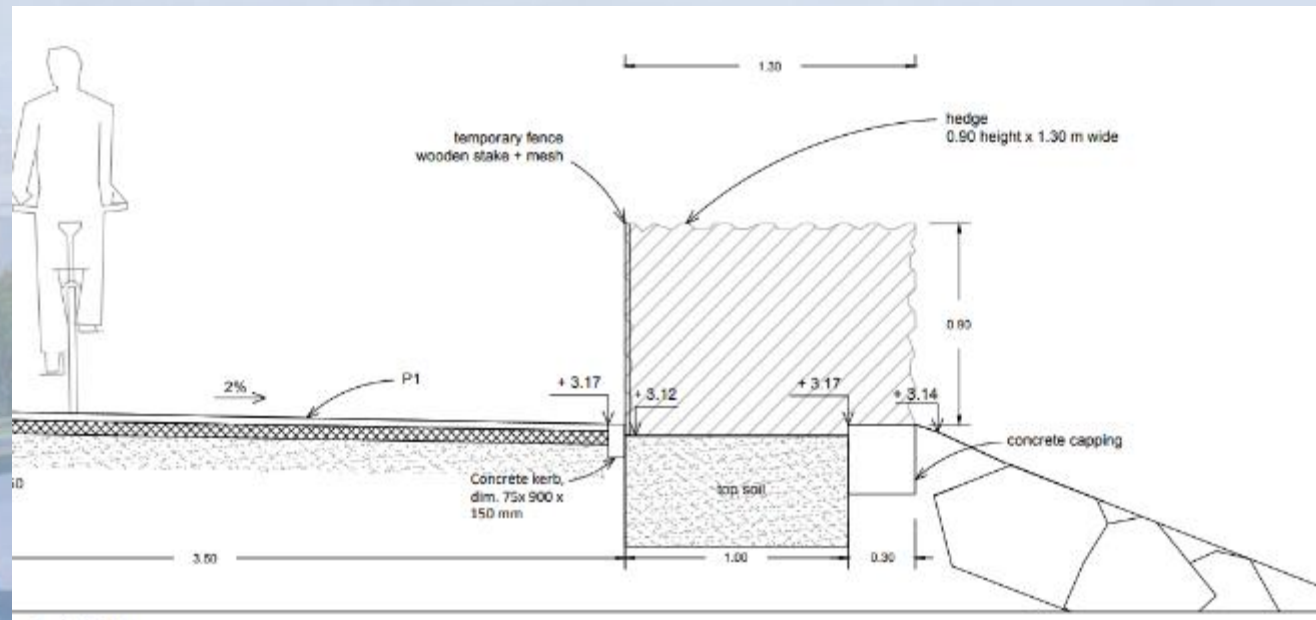
Dublin Port Park



Construction Details

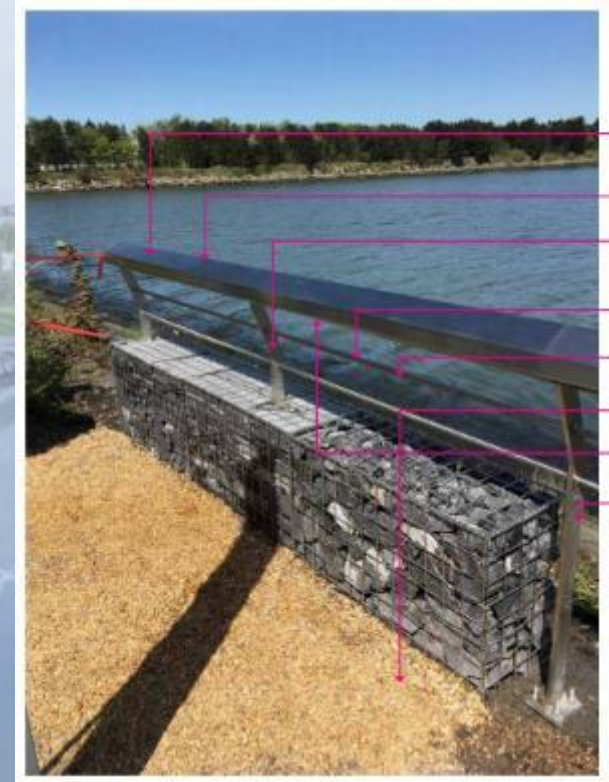
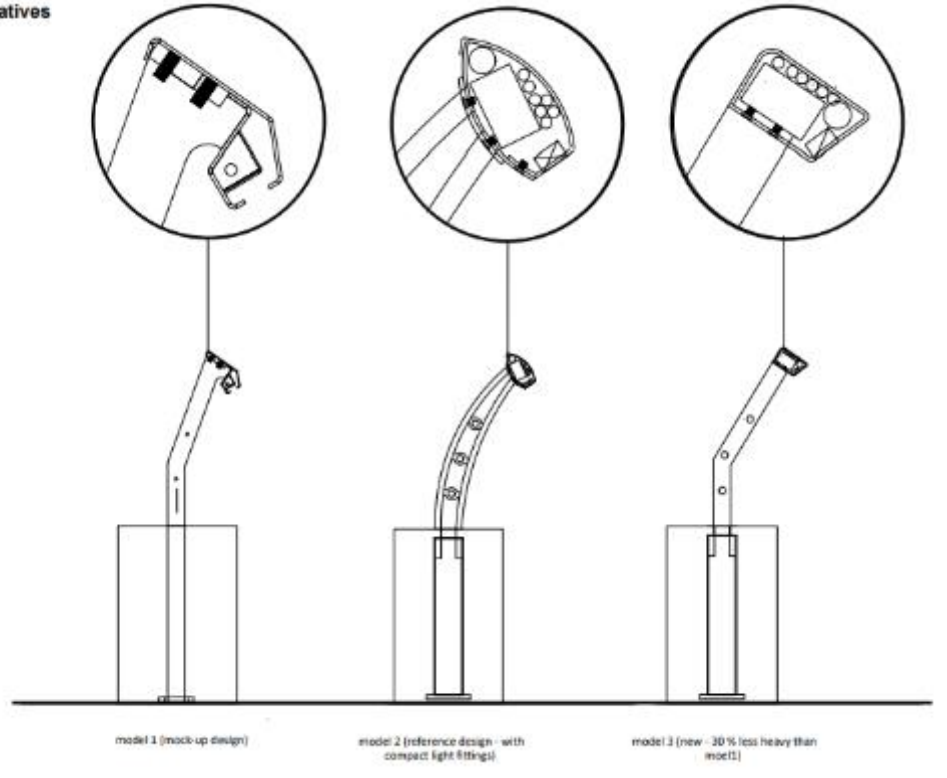
- Box hedging along greenway boundary, primarily consisting of *Lonicera Pileata*, interspersed with *Brachyglottis*, *Eleagnus*, Damask Rose, Dogwood, Spindle and Guilder Rose 1m – 2m high
- Bespoke Lighting Scheme incorporating 5m high lighting standards with cowled, focussed, low-energy lighting to avoid light spill and sections of handrail lighting.
- Revetment repair and reinforcement where eroded
- Stepped park area with plastic reinforced concrete benches with inset lighting
- Durable wooden benches
- Provision for viewing areas and observation points

Details – Box Hedge



Details – Lighting

Fencing alternatives



Viewing Areas and Observation Points



Programme

- Tendering Period: May – October 2019
- Mobilisation: November 2019
- Phased Construction Works: 2020 – 2022

