

## Leisure Craft

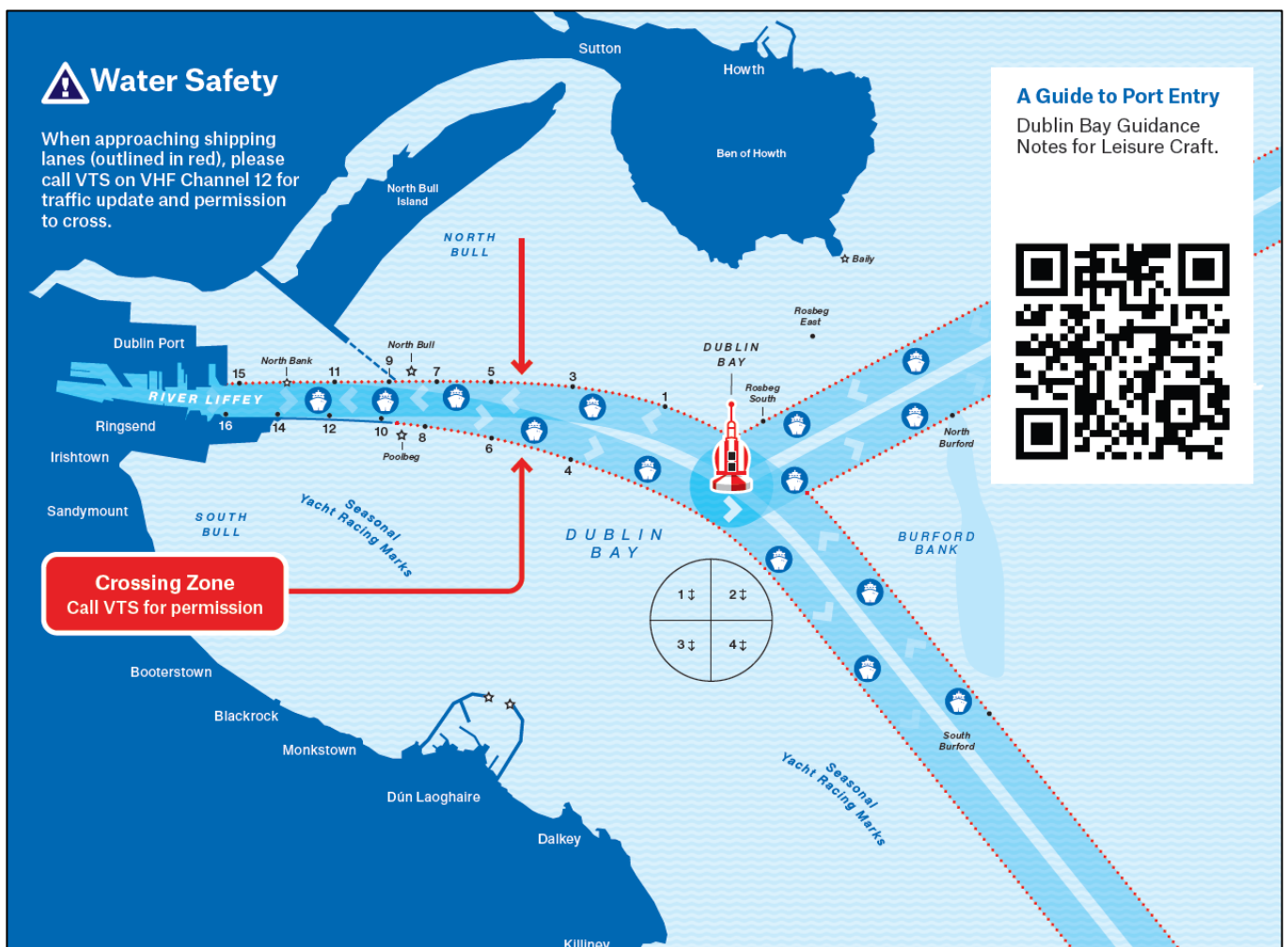
Dublin Bay is for everyone. It is also a busy working Port.

### Guidance for Leisure Craft

Leisure Craft, which includes but is not limited to power driven vessels; motorboats, RIBs, PWCs or jetskis, sailing vessels; yachts, dinghies, windsurfers, kayaks, stand-up paddleboards, surfboards, rowing boats, kite surfers, must adhere to the guidelines and regulations as set out in the “Dublin Bay Guidance Notes for Leisure Craft”

[www.dublinport.ie/information-centre/guide-port-entry/](http://www.dublinport.ie/information-centre/guide-port-entry/) and Water Safety Information at [www.dublinport.ie/water-safety](http://www.dublinport.ie/water-safety)

Leisure Craft must be aware that large commercial vessels can be encountered in Dublin Bay, arriving and departing from Dublin Port, Dun Laoghaire and the Anchorage. Due to their size and draft these vessels are limited in the action they can take and the sea room available to them to avoid close quarter situations, particularly when navigating in the Fairway and Traffic Separation Schemes.



Captain Michael McKenna | Harbour Master | 01 January 2023

Masters, owners, agents, charterers, marinas, yacht clubs and recreational boaters should ensure that the contents of this notice are made known to the persons in charge of their vessels or craft. All notices to mariners can be found at [www.dublinport.ie/information-centre/notice-to-mariners/](http://www.dublinport.ie/information-centre/notice-to-mariners/)



Dublin  
SafePort

Enhancing  
safety culture  
and practice,  
port-wide.

When navigating in Dublin Bay it is a requirement that Leisure Craft call in to VTS on VHF Channel 12 to get traffic updates and permission to transit the area, cross the Fairway Channel and Traffic Routing Schemes or enter the Port. Leisure Craft should then keep a listening watch on VHF channel 12 for further updates on shipping movements at all times.

Leisure vessels should;

- Report to VTS and maintain a listening watch on VHF Channel 12 while navigating in the jurisdiction.
- It is advisable to have a radio accessible at the steering position.
- Advise VTS if intending to cross the Fairway or Traffic Schemes, crossing should be done at right angles to the channel and only after obtaining permission from VTS.
- Make their intentions clear, by holding a steady course or making a large and substantial alteration of course if keeping out of the way.
- Comply with International Regulations for Prevention of Collisions at Sea at all times, noting in particular;
  - Avoid impeding the passage of a vessel that can safely navigate only within a narrow channel or fairway (Rule 9.b)*
  - Avoid crossing a narrow channel or fairway if such crossing impedes the passage of a vessel which can safely navigate only within such channel or fairway (Rule 9.d)*
  - A vessel navigating in areas near the terminations of traffic separation schemes shall do so with particular caution (Rule 10.f)*
  - A vessel not using a traffic separation scheme shall avoid it by as wide a margin as practicable (Rule 10.h)*
  - Vessels less than 20m or sailing vessels shall not impede the safe passage of a power-driven vessel following a traffic lane (Rule 10.j)*
- Operate at a safe speed at all times.

Leisure Craft entering or exiting the Port should pass along the south side of the channel, remaining as far as is practicable to that side. Leisure Craft entering or exiting the port must be under power.

Leisure Craft are prohibited from approaching the Commercial Berths and from entering Alexandra Basin, Alexandra Basin East, The Oil Zone, Ferryport Basin West and Ferryport Basin East.

## Guidance for Merchant Vessels

Masters, Warranted Pilots, Holders of Pilotage Exemption Certificates, Owners, Operators and Agents of all Vessels navigating within Dublin Port should be aware that a variety of leisure and recreational craft can be encountered in Dublin Bay at any time of day or night.

Merchant vessels should;

- Be aware that not all vessels participate in VTS and that VTS may not be able to identify all vessels moving in the jurisdiction.
- Ensure a proper lookout is maintained at all times (*Rule 5*).
- Ensure that the vessel is proceeding at a safe speed so that she can take proper and effective action to avoid collision and be stopped within a distance appropriate to the prevailing circumstances and conditions (*Rule 6*).
- Ensure that proper and effective action is taken to avoid collision, in ample time and with due regard to the observance of good seamanship, this may include stopping the vessel (*Rule 8*).
- Be aware of the responsibilities between vessels (*Rule 18*).
- Make use of the appropriate manoeuvring and warning signals (*Rule 34*).
- Report sightings and movement of vessels not participating to VTS.

