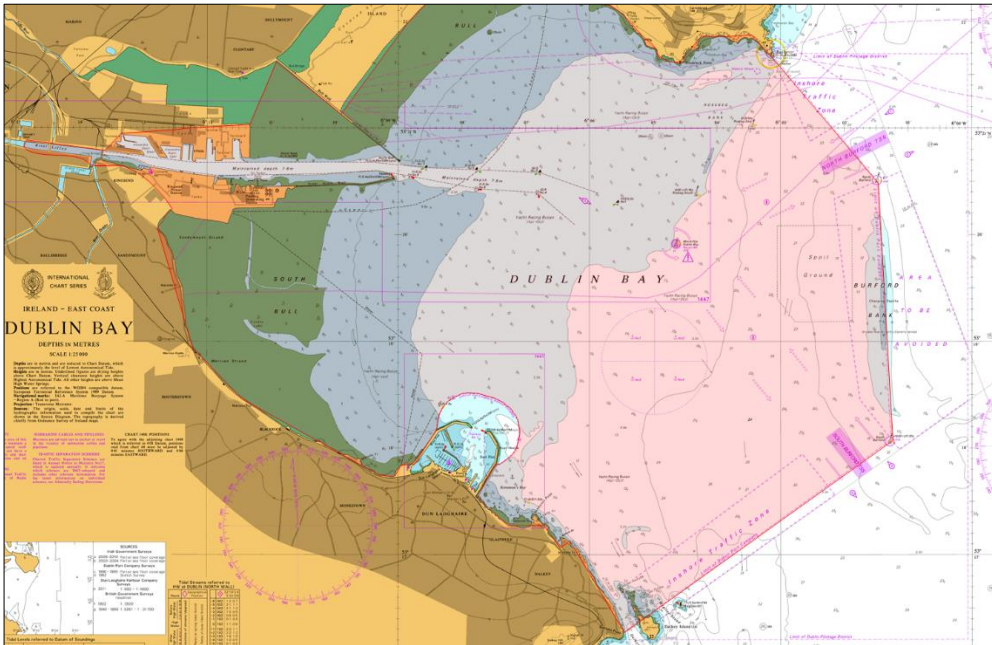


NOTICE TO MARINERS

Satellite Communications in the 6GHz Band

Masters of all vessels, in particular cruise vessels, are hereby advised that the use of satellite equipment in the 6GHz band is restricted while in the jurisdiction of Dublin Port Company. This band is used for fixed terrestrial services within the State the unregulated use of satellite equipment in this band can and often does result in harmful interference.



Extract of BA1415 with DPC edits for display purposes. Not For Navigation © Crown Copyright.
Reproduced by permission of the Controller of His Majesty's Stationery Office and the UK Hydrographic Office www.GOV.uk/UKHO

To facilitate the use of such equipment in a way that ensures harmful interference does not occur; the Commission for Communications Regulation (ComReg) has issued a licence to Dublin Port Company operating on 5960.025MHz (licence numbers SA11277/1 & SA11277/2).

Masters must be aware of the frequencies used by their vessels (uplink or downlink) if these frequencies are within the 6 GHz band they must be changed to fall within the frequency range licenced to Dublin Port Company. Special attention should be paid to satellite equipment so that there are no errors relating to the difference between UTC and Irish summer time (UTC+1).

Any vessel that does not adhere to the frequency range licenced to the Dublin Port Company is committing an offence under the Wireless Telegraphy Acts 1926 to 2009. ComReg may board and search any ship to seize any unlicensed equipment and/or commence prosecution proceedings against responsible parties without further notice. Dublin Port Company will hold the Master fully responsible for any subsequent costs or actions against the Port.

Captain Michael McKenna | Harbour Master | 01 January 2025

Satellite Communications in the 6GHz Band

Cruise vessel Masters are required to submit the following declaration to the Harbour Office via their Agent prior to being granted entry to the Dublin Port jurisdiction.

Cruise Vessel mv _____

is not transmitting/receiving with the 6Ghz bandwidth and
will not make/receive transmissions in 6Ghz bandwidth during her call in Dublin Port

Master's Signature _____ Date _____

